

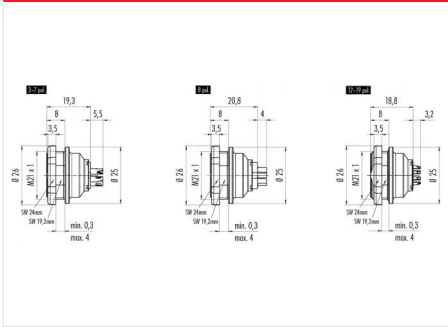
Product description **Contacts: 4, female panel mount connector, screwed from front, IP 67**

Area **Push-Pull IP67 Series 440**  
 Order number **09 4812 80 04**

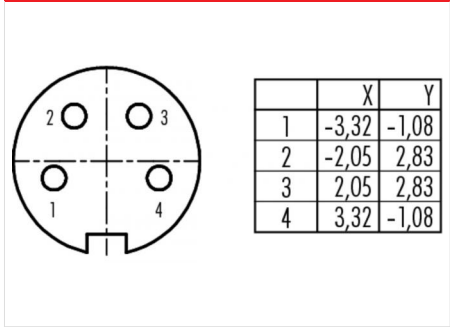
**Illustration**



**Scale drawing**



**Contact arrangement**



You can find the component part drawing and assembly instructions on the next page.

**Technical data**

**General values**

|                          |                              |
|--------------------------|------------------------------|
| Connector design         | female panel mount connector |
| Connector locking system | Push-Pull                    |
| Termination              | löten                        |
| Wire gauge (mm)          | 0,75 mm <sup>2</sup>         |
| Wire gauge (AWG)         | 20                           |
| Upper limit temperature  | 85 °C                        |
| Lower limit temperature  | -40 °C                       |

**Electrical values**

|                           |                           |
|---------------------------|---------------------------|
| Rated voltage             | 250 V                     |
| Rated impulse voltage     | 1500 V                    |
| Pollution degree          | 1                         |
| Overvoltage category      | I                         |
| Insulating material group | III                       |
| Rated current (40 °C)     | 6 A                       |
| Volume resistivity        | ≤ 3 mΩ                    |
| EMC compliance            | Shielding is not possible |
| Degree of protection      | IP67                      |
| Mechanical operation      | > 1000 Mating cycles      |

**Material**

|                       |                 |
|-----------------------|-----------------|
| Contact material      | CuSn (bronze)   |
| Contact plating       | Au (gold)       |
| Contact body material | PBT (UL 94 V-0) |

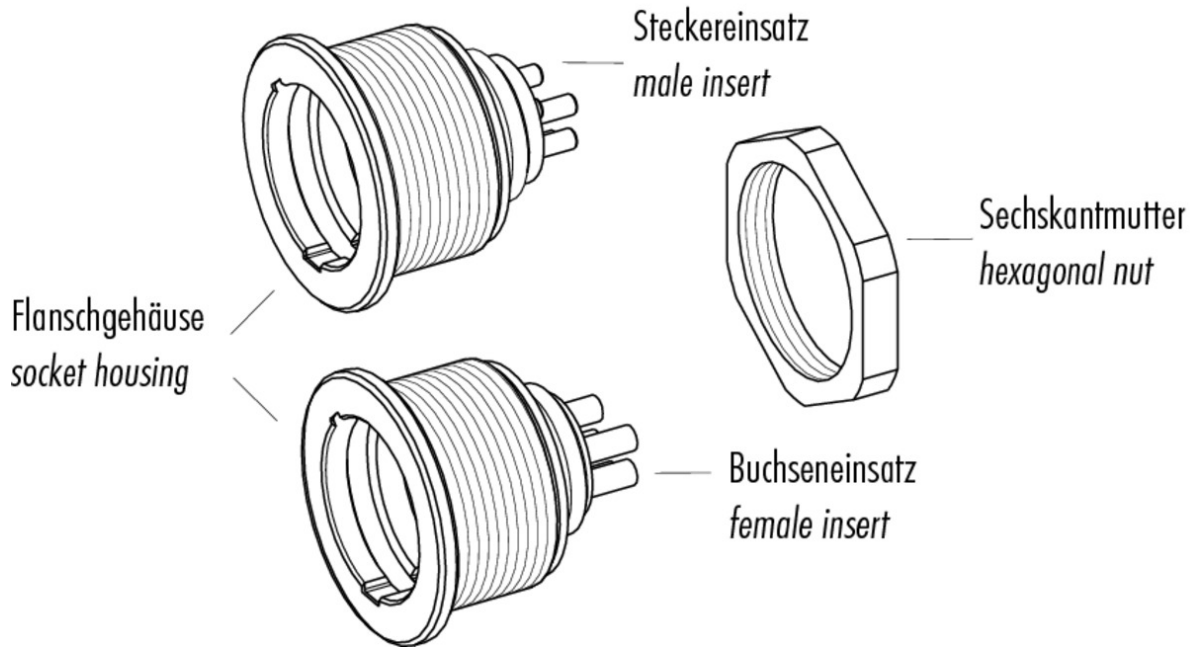
Product description

Contacts: 4, female panel mount connector, screwed from front, IP 67

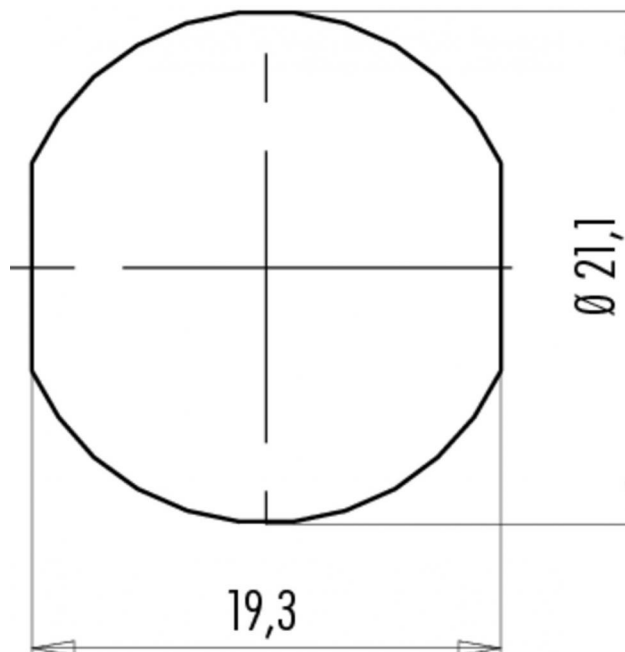
Area  
Order number

Push-Pull IP67 Series 440  
09 4812 80 04

Component part drawing



Assembly instructions / Panel cut-out



|                     |                                                                             |
|---------------------|-----------------------------------------------------------------------------|
| Product description | <b>Contacts: 4, female panel mount connector, screwed from front, IP 67</b> |
| Area                | <b>Push-Pull IP67 Series 440</b>                                            |
| Order number        | <b>09 4812 80 04</b>                                                        |

## Sicherheitshinweise

The connector must not be connected or separated under load. Non-observance and incorrect use can result in personal injury.

The connectors are designed for use in plant, control system and electrical equipment. The end user is responsible for checking whether the connectors are suitable for use in other applications.

Connectors used in electrical circuits containing hazardous life parts must only be assembled and used by or under the supervision of persons with the requisite electrotechnical training, taking the applicable regulations and standards into account.

Connectors with degree of protection IP 67 and IP 68 are not suitable for use under water. When used outdoors, the connectors must be separately protected against corrosion. For further information about IP degrees of protection refer to 'Technical support' in the Download Centre.

The connector is not suitable for mains voltages. Please observe the pollution degrees and the overvoltage category. For further information refer to 'Technical support' in the Download Centre.